

EXHIBITS PARTS CATALOG



THE EXHIBIT SUPPLY CO.

4222 W. LAKE ST.

CHICAGO 24, ILL.

ESTABLISHED 1901





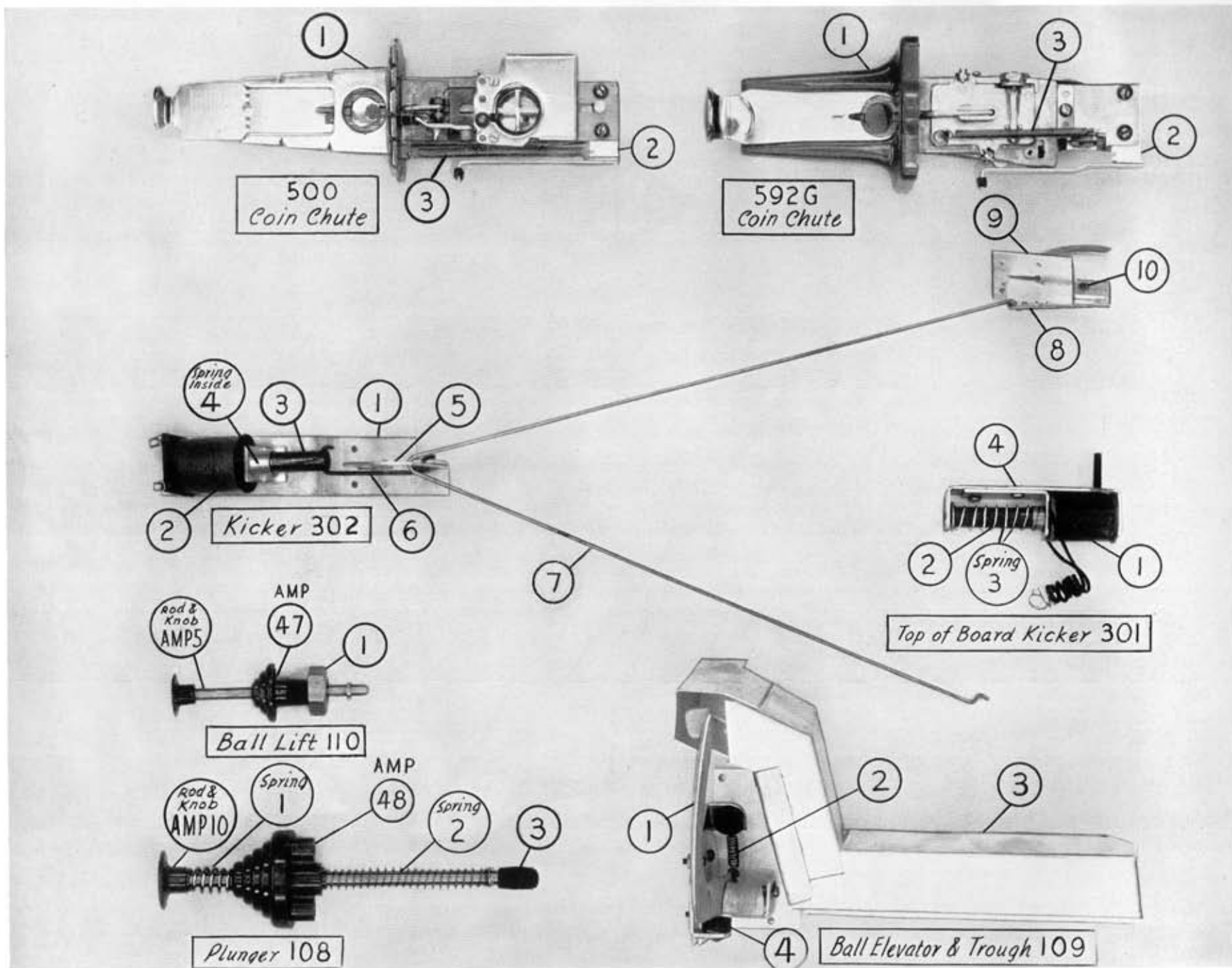
In placing this parts Catalog in your hands, we wish to express our sincere appreciation to the many users of genuine Exhibit parts, whose helpful suggestions have made this catalog possible.

We are keenly aware of our obligation to "you" the operator of Exhibit games. Many of you have told us about the problems you are facing and your suggestions have been invaluable in helping us prepare this catalog to meet your needs.

We will continue to maintain our policy of seeking the assistance of practical operators in the preparation of supplementary sheets which we will supply you from time to time to better enable you to keep up with the progress made by "EXHIBIT" in the manufacturing of quality coin operated games.

THE EXHIBIT SUPPLY CO.

ESTABLISHED 1901



IMPORTANT: When ordering always specify name of game and unit.

No. 500 COIN CHUTE

No. 500 Coin Chute—Complete Assembly

- 1—#500 Coin Chute only
- 2—Extension only for #500 Coin Chute
- 3—Spring only for #500 Coin Chute

No. 592-G COIN CHUTE

No. 592-G Coin Chute—Complete Assembly

- 1—#592-G Coin Chute only
- 2—Extension only for #592-G Coin Chute
- 3—Spring only for #592-G Coin Chute

KICKER No. 302 UNDER BOARD

No. 302 Kicker Assembly consisting of No. 1-2-3-4-5-6

- 1—Frame—Specify game & where used
- 2—Coil
- 3—Armature
- 4—Spring
- 5—Segment or Finger
- 6—Formed Wire Connector
- 7—Formed Wire Connector
- 8—Segment or Finger
- 9—Frame
- 10—Rivet

{Specify game
and number
of Kickers

KICKER No. 301 TOP OF BOARD

No. 301 Kicker—Complete Assembly

- 1—Coil
- 2—Armature
- 3—Spring
- 4—Frame Assembly

BALL LIFT

No. 110 Ball Lift Complete

- AMP 5 —Rod & Knob
- AMP 47—Housing
- 1—Nut

PLUNGER No. 108

No. 108 Plunger—Complete

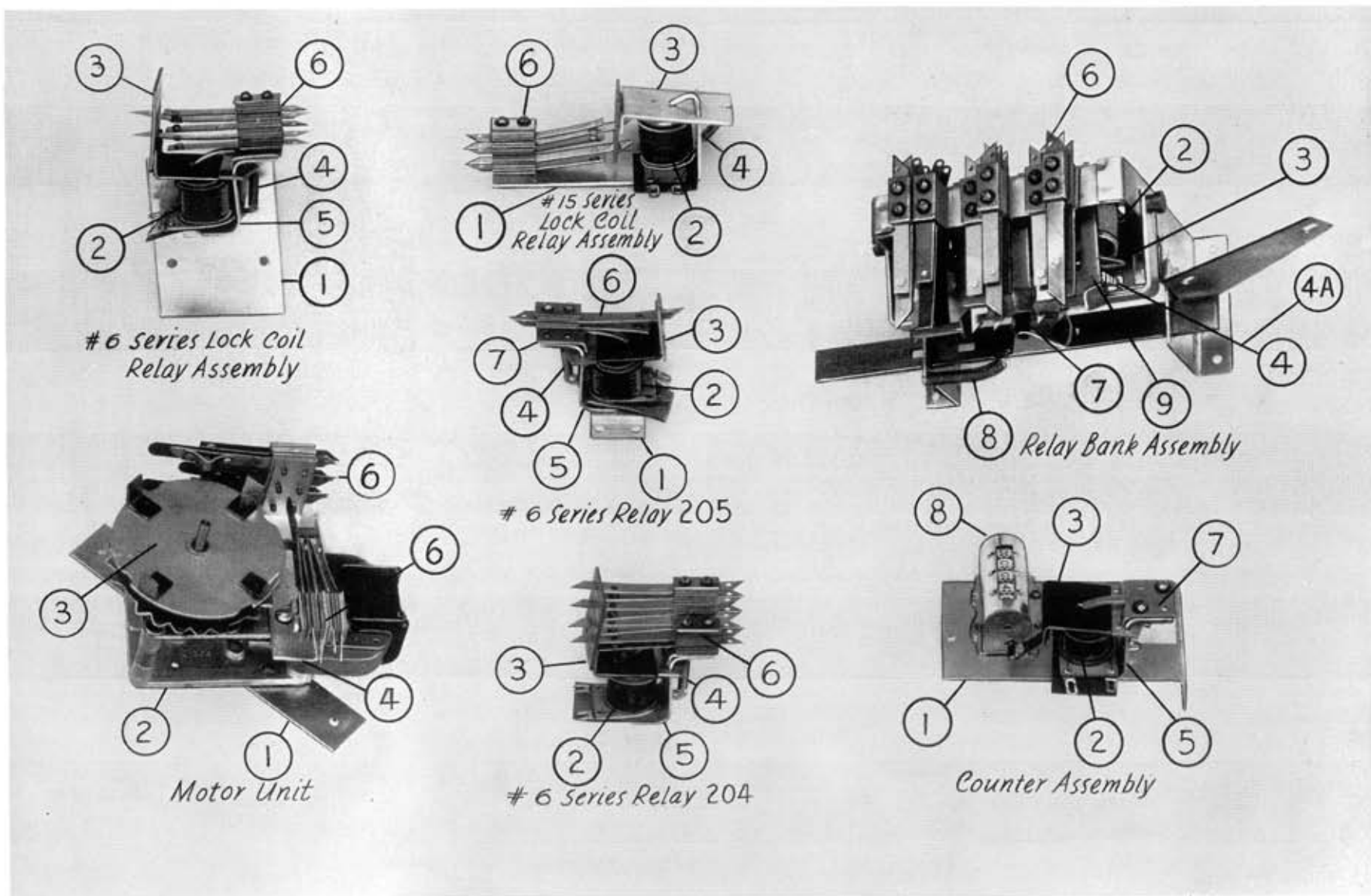
- AMP 10—Rod & Knob
- AMP 48—Housing
- 1—Barrel Spring
- 2—Plunger Spring and washer
- 3—Rubber Tip

BALL ELEVATOR & TROUGH No. 109

No. 109 Complete Assembly

- 1—Elevator only
- 2—Spring
- 3—Trough
- 4—Grommet

IMPORTANT: Always mention name of game and unit.



IMPORTANT: When ordering always specify name of game and unit.

No. 6 Series Lock Coil Relay Assembly

- 1—Mounting Plate
- 2—Coil— Specify number where possible
- 3—Armature Plate—Specify whether 1 or 3 slot Fibre
- 4—Spring
- 5—Relay Frame
- 6—Contact Assembly—See Page 9

Note:

When No. 6 series lock coil relay assembly is ordered we will supply No. 15 series lock coil relay assembly which replaces the No. 6 series lock coil.

No. 6 Series Relay 204

- 2—Coil
- 3—Armature Plate—Specify number of slots in Fibre
- 4—Spring
- 5—Relay Frame
- 6—Contact—See Page 9

No. 6 Series Relay 205

- 1—Mounting Bracket
- 2—Coil
- 3—Armature Plate
- 4—Spring
- 5—Relay Frame
- 6—Contact Assembly—See Page 9
- 7—Stop—for Armature Plate

No. 15 Series Lock Coil Relay Assembly

- 1—Frame
- 2—Coil
- 3—Armature
- 4—Spring
- 6—Contact Assembly—See Page 9

Relay Bank Assembly

- 2—Coil—Specify Number of coil when visible or mention name printed on relay
- 3—Relay Bank Armature Flap
- 4—Latch Spring
- 4A—Armature Spring
- 6—Contact Assembly — See Page 9
- 7—Relay Bank Roller
- 8—Bank Spring
- 9—Latch

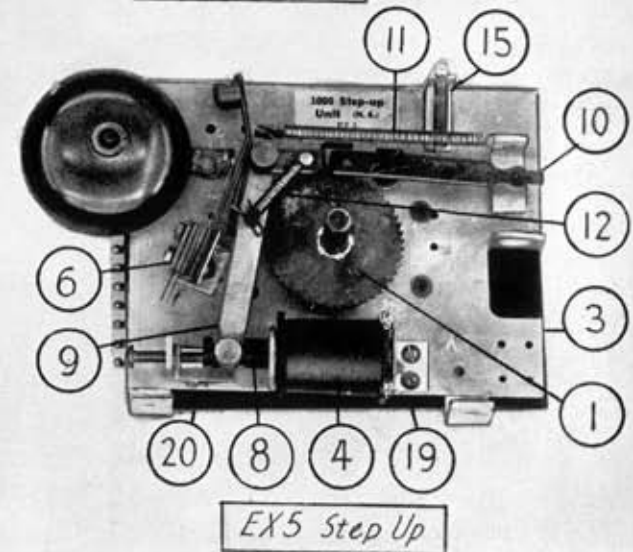
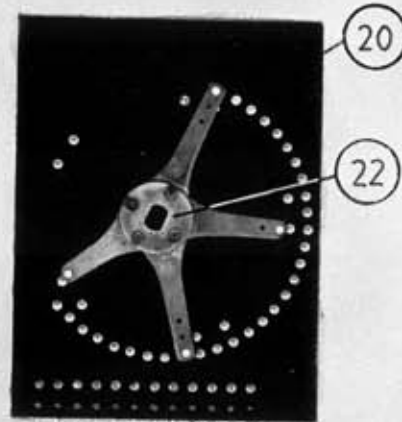
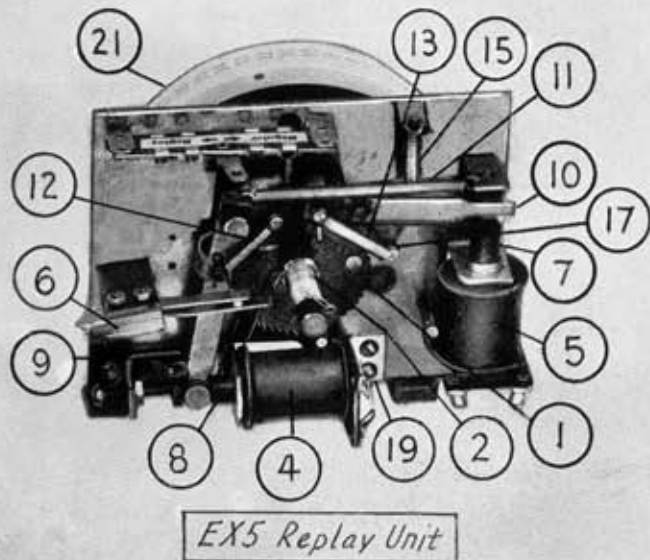
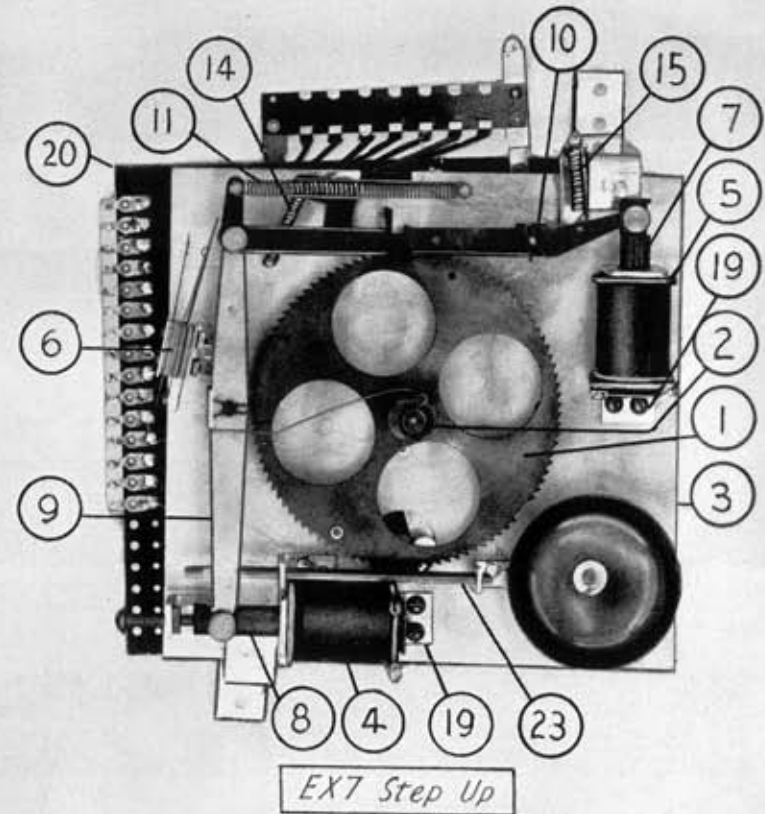
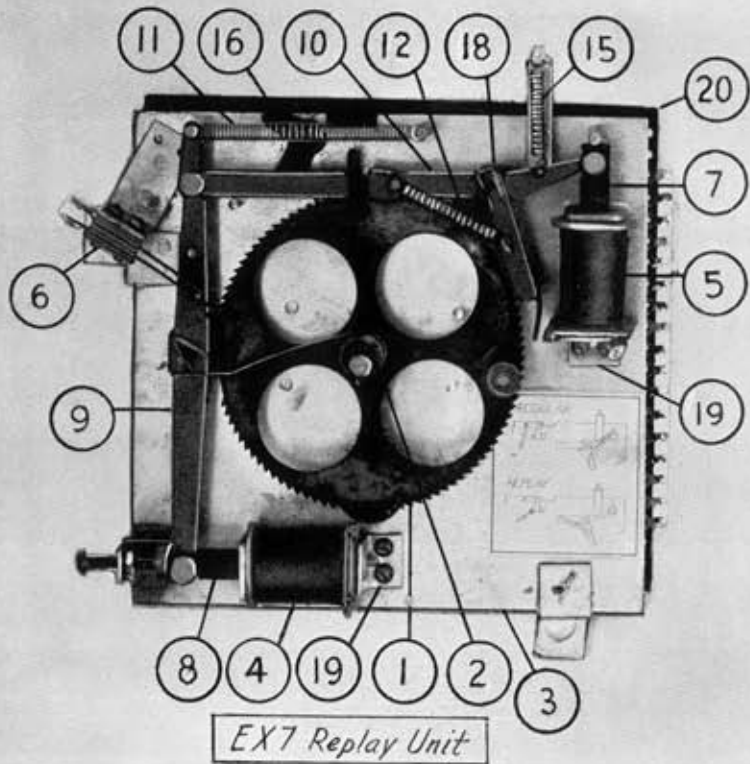
Motor Unit

- 1—Mounting Bracket
- 2—Motor
- 3—Cam
- 4—Contact Mounting Bracket
- 6—Contact Assembly — See Page 9

Counter Assembly

- 1—Mounting Frame
- 2—Coil
- 3—Armature
- 5—Relay Frame
- 7—Armature Stop
- 8—Counter

IMPORTANT: Always mention name of game and unit.



IMPORTANT: Always mention name of game and unit.

EX 7—Replay Unit

- 1—Ratchet
- 2—Torsion Spring
- 3—Frame
- 4—Step Up Coil
- 5—Reset Coil
- 6—Contact Assembly
See Page 9
- 7—Reset Armature
- 8—Step Up Armature
- 9—Step Up Arm
- 10—Reset Arm
- 11—Step Up Spring
- 12—Escapement Spring
- 15—Reset Spring
- 16—Reset Latch
- 18—Reset Escapement Pawl
- 19—Coil Armature Stop
- 20—Bakelite "Biscuit" Specify
Game
- 22—Wiper — Not visible in photo-
graph
Always specify name of game

EX 7—Step Up

- 1—Ratchet
- 2—Torsion Spring
- 3—Frame
- 4—Step Up Coil
- 5—Reset Coil
- 6—Contact Assembly
See Page 9
- 7—Reset Armature
- 8—Step Up Armature
- 9—Step Up Arm
- 10—Reset Arm
- 11—Step Up Spring
- 14—Reset Latch Spring
- 15—Reset Spring
- 19—Coil Armature Stop
- 20—Bakelite "Biscuit" Specify
Game
- 22—Wiper — Not visible in photo-
graph
Important — always give name
of game
- 23—Bell Striker

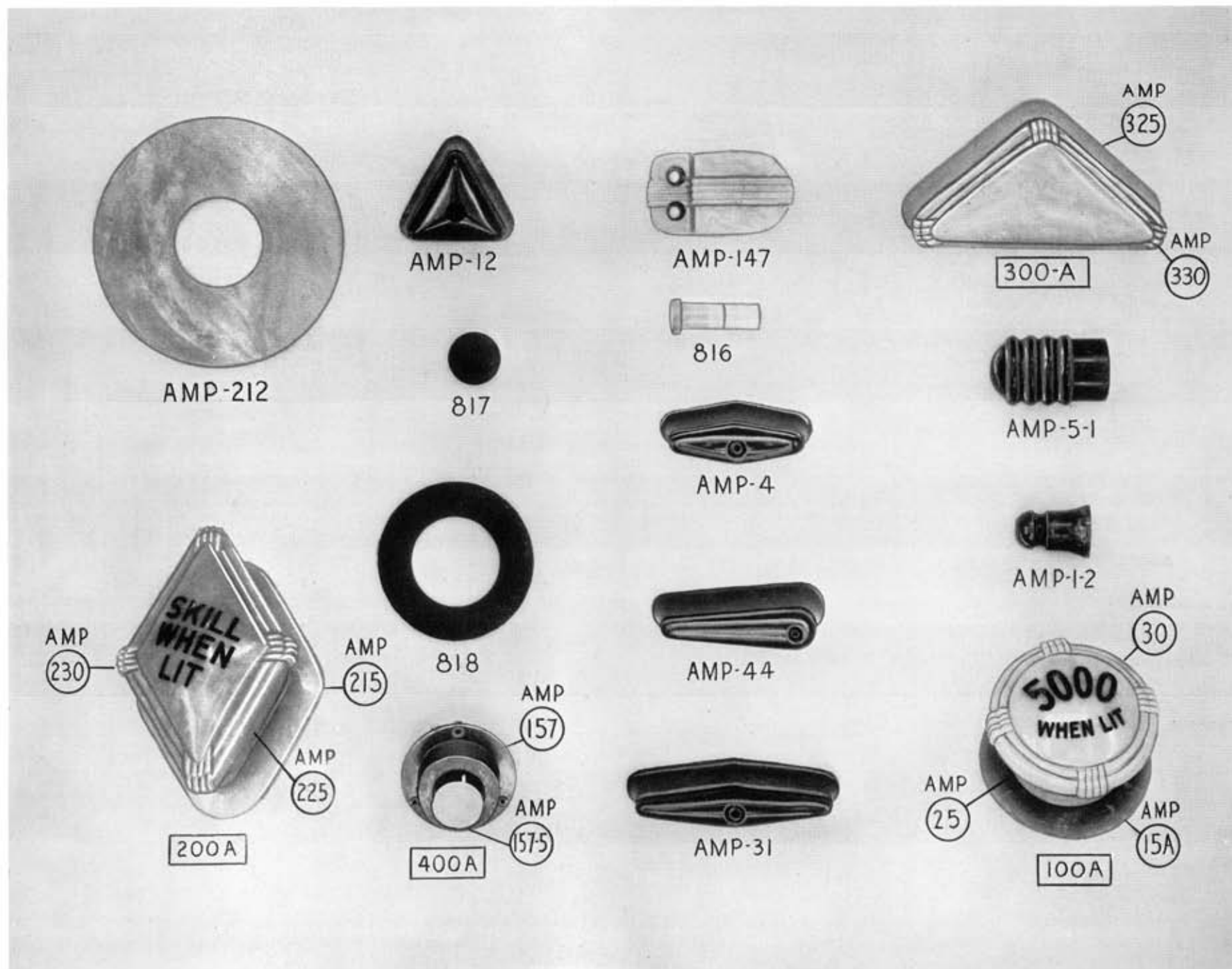
EX 5—Replay Unit

- 1—Ratchet
- 2—Torsion Spring
- 3—Frame
- 4—Step Up Coil
- 5—Reset Coil
- 6—Contact Assembly
See Page 9
- 7—Reset Armature
- 8—Step-Up Armature
- 9—Step Up Arm
- 10—Reset Arm
- 11—Step Up Spring large
- 12—Spring Step Up Pawl
- 13—Escapement Spring
- 15—Reset Spring
- 17—Reset Escapement Pawl
- 19—Coil Armature Stop
- 20—Bakelite "Biscuit"
Specify Game
- 21—Replay Drum

IMPORTANT: Always give name of game and unit when ordering.

EX 5—Step Up

- 1—Ratchet
- 3—Frame
- 4—Step Up Coil
- 6—Contact Assembly — See
Page 9
- 8—Step Up Armature
- 9—Step Up Arm
- 10—Reset Arm
- 11—Reset Spring
- 12—Spring—Step Up Pawl
- 15—Reset Spring
- 20—Bakelite "Biscuit" {Specify
name of
game}
- 22—Wiper
Important—always mention
name of game

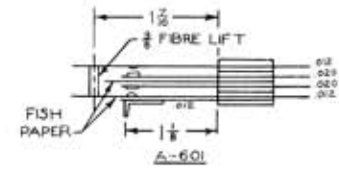


IMPORTANT: When ordering always specify name of game and unit.

AMP-212	Plastic Saucer – Specify color	AMP-325	Triangle Bumper Body only – Specify color
AMP-12	Triangle Percentage Adjuster – Specify color	100A	Complete Round Bumper Assembly – Specify Color & lettering
816	Lucite Button	AMP-25	Round Bumper Body only – Specify Color
817	Catalin Disc (Playboard Insert) – Specify color and diameter	AMP-30	Round Bumper Cap only – Specify color & lettering
818	Catalin Ring (Playboard Insert) – Specify color plus inside and outside diameters	AMP-15A	Round Bumper Wafer only – Specify color
200A	Complete Diamond Bumper Assembly – Specify color and lettering; also if used on right or left side	AMP-1-2	Small Plastic Post – Specify color
AMP-230	Diamond Bumper Cap only – Specify color and lettering; also if used on right or left side	AMP-5-1	Lite-up Stationary Plastic Post – Specify color
AMP-225	Diamond Bumper Body only – Specify color	AMP-4	Small Percentage Adjustor – Specify color
AMP-215	Diamond Bumper Wafer only – Specify color	AMP-44	Tapered Percentage Adjustor – Specify color
300A	Complete Triangle Bumper Assembly – Specify color	AMP-31	Large Percentage Adjustor – Specify color
AMP-330	Triangle Bumper Cap only – Specify color	400A	Complete Plastic Button Assembly – Specify color
		AMP-157	Button Housing – Specify color
		AMP-157-5	Plastic Button – Specify color
		AMP-147	Plastic Gate Spring Holder – Specify color

**THE FOLLOWING ITEMS ARE NOT ILLUSTRATED. ORDER
BY NUMBER AND SPECIFY NAME OF GAME.**

CA-103	Front Rail – Mitered ends	C-105	Rubber Rings 13/16" O.D.
CA-104	Front Rail – Round ends	C-106	Rubber Rings 1¼" O.D.
C-101	Front Door (Lock hole same side as coin chute hole). Specify Game	C-107	Rubber Rings 1½" O.D.
C-102	Front Door (Lock hole opposite side of coin chute hole). Specify Game	C-108	Rubber Rings 2" O.D.
C-100	Screened Back glass – Specify Game	1090	"Hairpin" Clip for Lucite Button
		609	Wire holder for carbon ring
		B-24	Carbon Ring



A-602



A-603



A-604



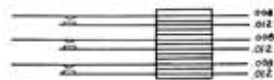
A-605



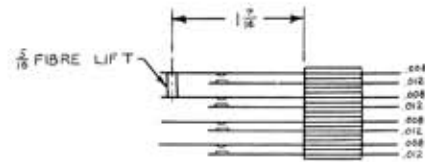
A-606



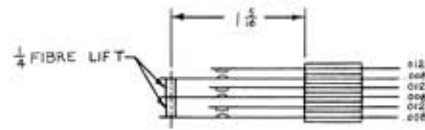
A-607



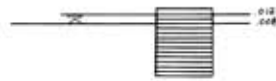
A-608



A-609



A-610



A-611



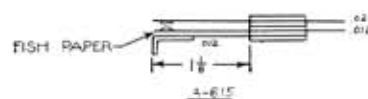
A-612



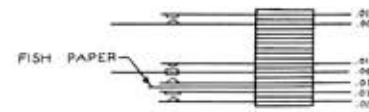
A-613



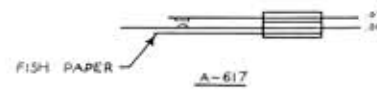
A-614



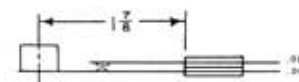
A-615



A-616



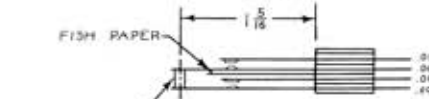
A-617



A-618



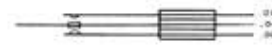
A-619



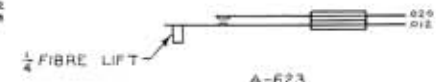
A-620



A-621



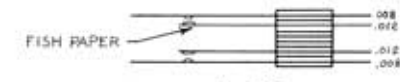
A-622



A-623



A-624



A-625



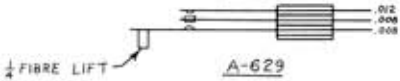
A-626



A-627



A-628



A-629

CONTACT ASSEMBLIES

Make selection by comparing with assembly to be replaced and order by number. Always mention name of game and unit to be used on.

This Catalog has been designed to aid you in ordering parts for all of the following EXHIBIT Post War games.

BIG HIT

SMOKY

CROSS FIRE

FAST BALL

VANITIES

RANGER

FIESTA

MYSTERY

MAM'SELLE

CO-ED

TALLY HO

ALSO LATE PRE-WAR GAMES

As new parts are released you will be supplied with supplementary sheets.

Always mention name of game and unit when ordering

THE EXHIBIT SUPPLY CO.

4222 W. LAKE STREET

CHICAGO 24, ILL.

ESTABLISHED 1901

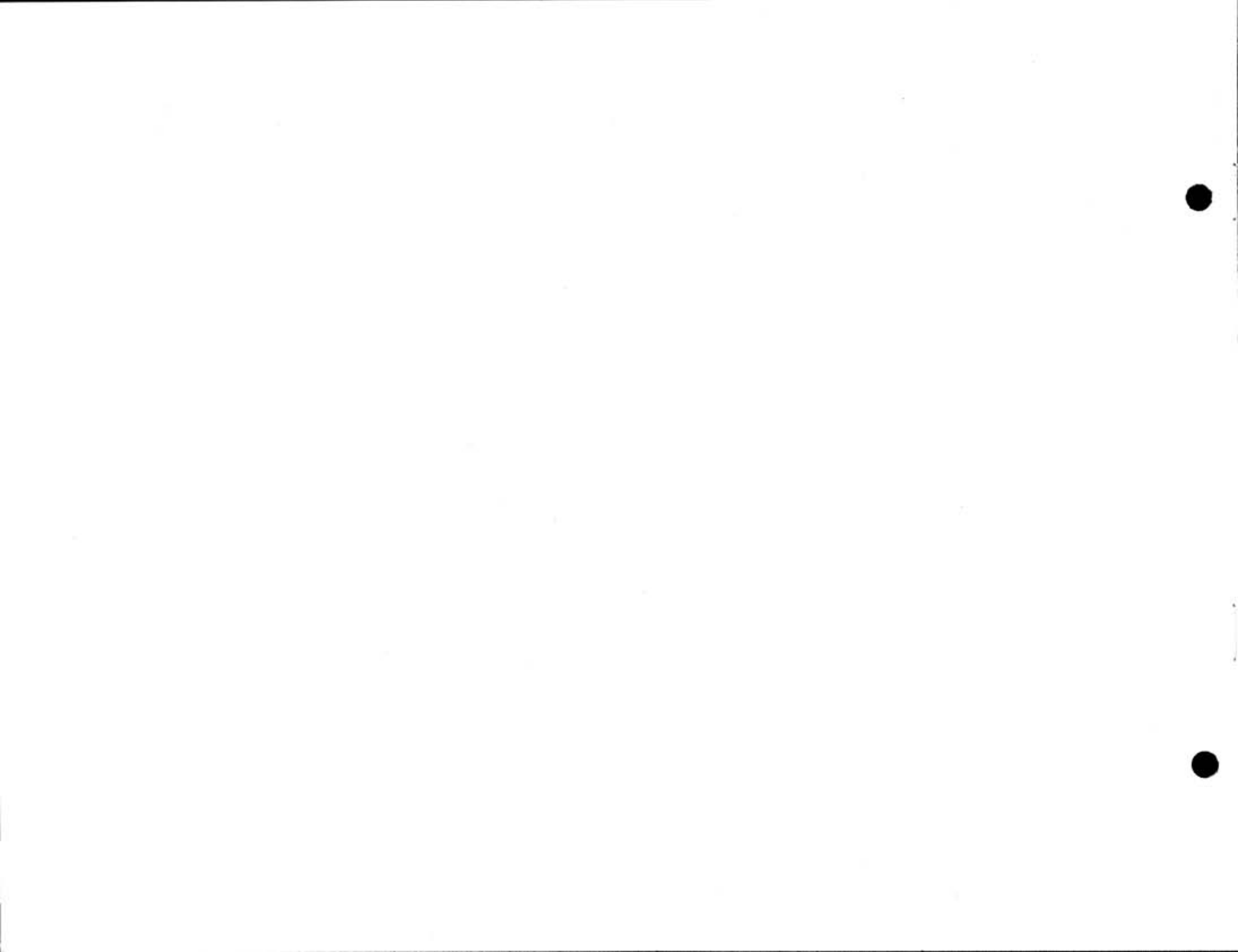


EXHIBIT SUPPLY CO. PRICE LIST

Prices Subject to Change Without Notice

JANUARY 1948

All shipments will be sent Prepaid if full remittance accompanies your order
When ordering BE SURE TO SPECIFY NAME OF GAME AND UNIT in addition to part number and name

NO. 500 COIN CHUTE

No. 500 Coin Chute—Complete Assembly.....	\$ 4.75
1—No. 500 Coin Chute only.....	4.50
2—Extension only15
3—Spring only10

NO. 592-G COIN CHUTE

No. 592-G Coin Chute—Complete Assembly.....	4.75
1—No. 592-G Coin Chute only.....	4.50
2—Extension only15
3—Spring only10

KICKER NO. 302 UNDER BOARD

No. 302 Kicker Assembly—Consisting of No. 1-2-3-4-5-6.....	3.00
1—Frame25
2—Coil	1.20
3—Armature36
4—Spring05
5—Segment or Finger.....	.10
6—Formed Wire Connector.....	.20
7—Formed Wire Connector.....	.20
8—Segment or Finger.....	.10
9—Frame25
10—Rivet03

KICKER NO. 301 TOP OF BOARD

No. 301 Kicker—Complete Assembly.....	\$ 3.00
1—Coil	1.15
2—Armature75
3—Spring05
4—Frame Assembly25

BALL LIFT

No. 110 Ball Lift Complete.....	1.00
AMP 5—Rod and Knob.....	.35
AMP 47—Housing35
1—Nut10

PLUNGER NO. 108

No. 108 Plunger Complete.....	2.10
AMP 10—Rod and Knob.....	.85
AMP 48—Housing66
1—Barrel Spring10
2—Plunger Spring and Washer.....	.15
3—Rubber Tip05

No. 109 Complete Ball Elevator and Trough Assembly	\$ 4.20
1-Elevator only	1.45
2-Spring05
3-Trough	2.65
4-Grommet05

No. 6 Series Lock Coil Relay Assembly	2.85
1-Mounting Plate20
2-Coil	1.20
3-Armature Plate40
4-Spring05
5-Relay Frame25

No. 6 Series Relay 204	2.60
2-Coil	1.20
3-Armature Plate40
4-Spring05
5-Relay Frame25

No. 6 Series Relay 205	2.85
1-Mounting Bracket05
2-Coil	1.20
3-Armature Plate38
4-Spring05
5-Relay Frame25
7-Stop-for Armature Plate.....	.05

No. 15 Series Lock Coil Relay Assembly	3.50
1-Frame25
2-Coil	1.50
3-Armature40
4-Spring05

Relay Bank Assembly	Write
2-Coil	\$.70
3-Relay Bank Armature Flap}10
4-Latch Spring	
4A-Armature Spring04
7-Relay Bank Roller.....	.25
8-Bank Spring10
9-Latch05

Motor Unit	12.00
1-Mounting Bracket10
2-Motor	7.50
3-Cam40
4-Contact Mounting Bracket.....	.15

Counter Assembly	6.00
1-Mounting Frame25
2-Coil	1.20
3-Armature25
5-Relay25
7-Armature Stop05
8-Counter	3.00

Ex 5-Step Up	13.25
1-Ratchet90
3-Frame99
4-Step Up Coil.....	1.20
8-Step Up Armature.....	.38
9-Step Up Arm75
10-Reset Arm60
11-Reset Spring05
12-Spring-Step Up Pawl.....	.05
15-Reset Spring05
20-Bakelite "Biscuit"	5.75
22-Wiper (2 to 4 Fingers).....	.60 to .90

Ex	7-Step Up	\$19.75
	1-Ratchet	1.50
	2-Torsion Spring20
	3-Frame	1.30
	4-Step Up Coil.....	1.20
	5-Reset Coil	1.20
	7-Reset Armature38
	8-Step Up Armature.....	.38
	9-Step Up Arm.....	.90
	10-Reset Arm65
	11-Step Up Spring.....	.10
	14-Reset Latch Spring.....	.05
	15-Reset Spring05
	19-Coil Armature Stop.....	.30
	20-Bakelite "Biscuit"	6.00
	22-Wiper (1 to 5 Fingers).....	.45 to 1.05
	23-Bell Striker20

Ex	7-Replay Unit	17.95
	1-Ratchet	1.50
	2-Torsion Spring20
	3-Frame	1.30
	4-Step Up Coil.....	1.20
	5-Reset Coil	1.20
	7-Reset Armature38
	8-Step Up Armature.....	.38
	9-Step Up Arm.....	.90
	10-Reset Arm65
	11-Step Up Spring.....	.10
	12-Escapement Spring05
	15-Reset Spring05
	16-Reset Latch15
	18-Reset Escapement Pawl.....	.25
	19-Coil Armature Stop.....	.30
	20-Bakelite "Biscuit"	6.00
	22-Wiper (4 Finger).....	.90

Ex	5-Replay Unit	\$18.75
	1-Ratchet90
	2-Torsion Spring18
	3-Frame99
	4-Step Up Coil.....	1.20
	5-Reset Coil	1.20
	7-Reset Armature38
	8-Step Up Armature.....	.38
	9-Step Up Arm.....	.75
	10-Reset Arm60
	11-Step Up Spring, large.....	.09
	12-Step Up Spring Pawl.....	.05
	13-Escapement Spring05
	15-Reset Spring05
	17-Reset Escapement Pawl.....	.15
	19-Coil Armature Stop.....	.30
	21-Replay Drum	2.15

AMP-212	Plastic Saucer54
AMP-12	Triangle Percentage Adjuster.....	.22
816	Lucite Button54
817	Catalin Disc05
818	Catalin Ring45
200A	Complete Diamond Bumper Assembly.....	.90
AMP-230	Diamond Bumper Cap only.....	.18
AMP-225	Diamond Bumper Body only.....	.24
AMP-215	Diamond Bumper Wafer only.....	.18
300A	Complete Triangle Bumper Assembly.....	.36
AMP-330	Triangle Bumper Cap only.....	.18
AMP-325	Triangle Bumper Body only.....	.24
100A	Complete Round Bumper Assembly.....	.75
AMP-25	Round Bumper Body only.....	.18

AMP-30 Round Bumper Cap only.....	\$.18	CA-104 Front Rail	\$ 2.50
AMP-15A Round Bumper Wafer only.....	.18	C-101-C Front Door—Unpainted	2.10
AMP-1-2 Small Plastic Post.....	.09	C-102-C Front Door—Unpainted	2.10
AMP-5-1 Lite-up Stationary Plastic Post.....	.18	C-101 Front Door—Painted	2.75
AMP-4 Small Percentage Adjustor.....	.18	C-102 Front Door—Painted	2.75
AMP-44 Tapered Percentage Adjustor.....	.18	C-100 Screened Back Glass.....	9.00
AMP-31 Large Percentage Adjustor.....	.18	C-105 Rubber Rings10
400A Complete Plastic Button Assembly.....	.24	C-106 Rubber Rings10
AMP-157 Button Housing15	C-107 Rubber Rings15
AMP-157-5 Plastic Button10	C-108 Rubber Rings15
AMP-147 Plastic Gate Spring Holder.....	.20	1090 "Hairpin" Clip for Lucite Button.....	.03
CA-103 Front Rail	2.50	609 Wire Holder for Carbon Ring.....	.10
		B-24 Carbon Ring10

CONTACT ASSEMBLIES

A-601	\$.55	A-608	\$.55	A-615	\$.25	A-622	\$.30
A-60230	A-60980	A-61670	A-62330
A-60350	A-61065	A-61725	A-62430
A-60425	A-61135	A-61825	A-62550
A-60525	A-61250	A-61945	A-62650
A-60645	A-61345	A-62050	A-62750
A-60745	A-61455	A-62125	A-62865
						A-62935

ALL SHIPMENTS WILL BE SENT PREPAID IF FULL REMITTANCE ACCOMPANIES YOUR ORDER

When ordering BE SURE TO SPECIFY NAME OF GAME AND UNIT in addition to part number and name

THE EXHIBIT SUPPLY CO.

4222 W. LAKE STREET

CHICAGO 24, ILL.

ESTABLISHED 1901



